

Mighty Light – Tungsten Halogen (ML-TH)

A compact source of low-noise white light with versatile output modules

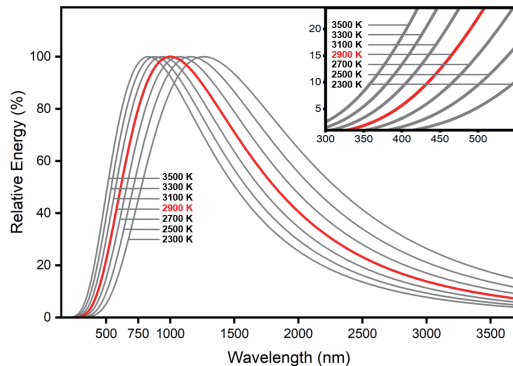
ML-TH integrates a Tungsten Halogen bulb and power supply with a control board that delivers uniquely low-noise output. By applying a series of pre-aligned bolt-on accessories, ML-TH can be directly coupled into a microscope and fiber bundle with its light beam homogenized and collimated. ML-TH can also be integrated with our unique Wavelength Selector devices to create a tunable monochromatic beam.

Specifications

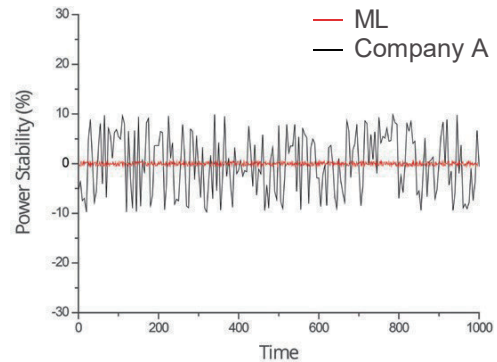
- Type of lamp: Tungsten Halogen
- Spectral wavelength : 350 - 2500 nm
- Lamp power consumption: 12 W
- Power stability: < 0.5 %
- Bulb lifetime: ~ 1,000 hours
- Color temperature : 2,900 K
- Dimensions: 125 x 75 x 70 mm
- Power supply : DC 9 V at 2 A
- Electric requirement : AC 100 - 240 V, 50/60 Hz



Features



Broad output spectrum



Low power fluctuation (High stability) : < 0.5 %

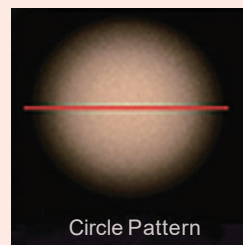
Collimated light



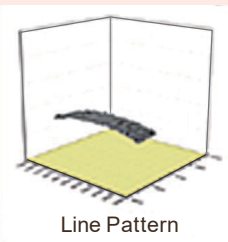
Collimated



Collimated (magnified)



Circle Pattern



Line Pattern

Uniform intensity when collimated