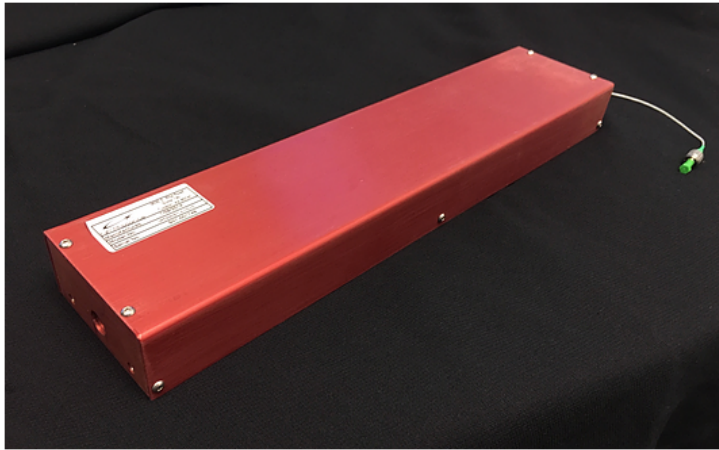


# Amplifier Gain Block

High Power Fiber Amplifier OEM Module



## Features

- High Gain in Short Length (cm)
- Compact OEM module package for system integrators
- Input spliced to commercial PM (LMA) Double-cladding fiber
- Very large MFA available
- Supports up to 100 W output power
- Supports greater than 500kW peak power
- Center wavelength over 1018 - 1080nm
- Near-single mode ( $M^2 < 1.3$ )
- Polarization Maintaining (PER >15dB)
- Hermetic sealing available
- Collimated output available
- Fully customizable

## PRODUCT SPECIFICATIONS

Parameter	Value
<b>Wavelength</b>	1018nm-1080nm; 1528nm-1575nm
<b>Output Average Power</b>	Up to 100 W
<b>Output Peak Power</b>	$\geq 500$ kW
<b>Gain (nominal)</b>	$\geq 16$ dB
<b>Optical to Optical Efficiency</b>	$\geq 45$ % (absolute) , $\geq 55$ % (slope)
<b>Polarization Extinction Ratio (PER)</b>	$\geq 15$ dB
<b>Beam Quality</b>	$M2 \leq 1.5$ (typically $\leq 1.3$ depending on wavelength)
<b>Gain Fiber Length</b>	$\geq 8$ cm (nominally 20 cm)
<b>Gain Fiber Mode Field Area (MFA)</b>	$\geq 500 \mu\text{m}^2$ (other MFA available upon request)
<b>Input Double-Cladding Silica Fiber (internally spliced)</b>	Nufern PM-GDF-1550 , PM-GDF-5/130, PLMA-GDF-10/125-M, PLMA-GDF-20/130 , PLMA-GDF-25/250-M (other fibers available upon request)
<b>Package Dimension (nominal)</b>	3" (W) x 1" (H) x 14"(L)
<b>Cooling</b>	Water, Air

NP Photonics Amplifiers are protected by a 12-month warranty. All components and assemblies are unconditionally warranted to be free of defects in workmanship and materials for the warranty period, beginning from the date of shipment. This warranty is in lieu of all other warranties, expressed or implied, and does not cover incidental or consequential loss. This warranty does not apply to devices damaged due to operating conditions outside of the specified parameters. Modified warranties for OEM customers are available.

GWU-Lasertechnik Vertriebsges. mbH

Bonner Ring 9  
50374 Ertstadt  
Germany

Fon +49 . (0)22 35 . 9 55 22-0  
Fax +49 . (0)22 35 . 9 55 22-99

info@gwu-group.de  
www.gwu-group.de

